

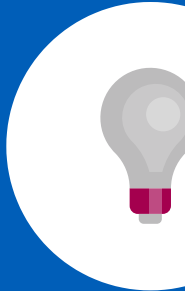
MARKETING AND COMMUNICATIONS MEMBERSHIP

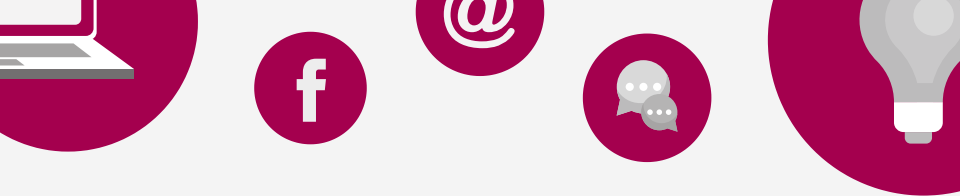
Including design, consultancy,
face-to-face training, e-learning,
resources and ongoing support.

£12,000 PER ANNUM

Our experienced team have
worked with more than 100 NHS
organisations and will use their
diverse experience to provide the
best solutions for you.

Full support shown overleaf.





MEMBERSHIP INCLUDES ALL OF THE FOLLOWING:

- 1 Production of a **promotional video** or standalone **microsite**.
- 2 Delivery of a **consultancy or design project** (e.g. branding for a service or co-production of a marketing plan).
- 3 Completion of a **website audit** or **social media review**.
- 4 Creation of a dedicated **photo library**.
- 5 Team entry to our library of **online learning** (from June 2020).
- 6 One free place at all our **face-to-face marketing workshops** (four per year in Central London).
- 7 Team access for our **webinar programme** (at least 10 per year).
- 8 Use of our range of **communication and marketing templates**, as well as our **icon library**.
- 9 Access to our regular #NHSComms **podcast**.
- 10 Unlimited **advice via email**.



sue.kong@nhs.net
joe.blunden@nhs.net